



## GRANDTEC ELECTRONIC CORP.

8F, NO.268, LIAN CHENG RD., CHUNG HO CITY, TAIPEI HSIEN 235, TAIWAN, R.O.C.

Tel: +886-2-8227 3588

Fax: +886-2-8227 3589 / 8227 3599

E-Mail: [grand@grand.com.tw](mailto:grand@grand.com.tw)

Web Site: [www.grand.com.tw](http://www.grand.com.tw)

# Grand Mega Pixel IP/ Wi-Fi Spill-Resistant Camera

H.264 Format/ 1.3 Mega Pixel Digital Recording/ Video & Audio Transmission



## 1. Introduction

**Grand Mega Pixel IP/ Wi-Fi Spill-Resistant Cameras** are full featured network cameras that enable you to remote view and listen with your web browser (supports iPhone WEB Browser). The Grand Mega Pixel IP/ Wi-Fi Spill-Resistant Cameras use the latest **H.264** video compression technology that provides clearer and more fluent image transmission.

The spill-resistant design expands the scope of applications by letting you install the camera under the eaves of house or store. Choose the Grand Mega Pixel IP/ Wi-Fi Spill-Resistant Cameras to enhance safety and security at your home or office.

## GRANDTEC ELECTRONIC CORP.

8F, NO.268, LIAN CHENG RD., CHUNG HO CITY, TAIPEI HSIEN 235, TAIWAN, R.O.C.

Tel: +886-2-8227 3588

Fax: +886-2-8227 3589 / 8227 3599

E-Mail: [grand@grand.com.tw](mailto:grand@grand.com.tw)

Web Site: [www.grand.com.tw](http://www.grand.com.tw)

## 2. Products Features

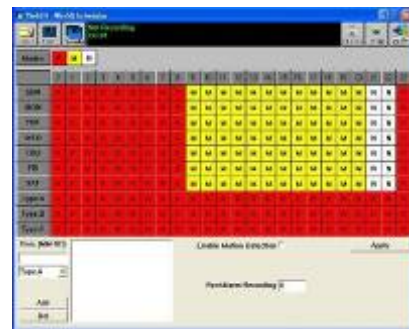
- 1/4" CMOS SXGA Sensor (1.3MegaPixel)
- Built-in High Sensitivity Microphone for remote listening.
- High Resolution Image Processor (160x120/ 320x240/ 640x480/ 1280x1024 )
- High Performance Image Compression with **H.264** & MJPEG codec
- Supports TCP/IP / HTTP / FTP / SMTP / DHCP / PPPoE / DDNS / UPnP / NTP service
- Supports Motion detected Mail Function
- Remote view through the IE browser, simply type in the IP address
- Supports iPhone Web Browser (in MJPEG format).
- IP Address Auto Detect Setup
- Compatible with Windows XP/ Vista/ Linux OS.
- Multi-Languages OSD: English / French / Portuguese / German / Italian / Netherland / Spanish/ Russian / Japanese / Traditional Chinese
- Ethernet RJ-45,10/100 Base-T auto-sense
- Built-in 802.11g Wi-Fi Module (Wi-Fi Camera only)
- 12-LED infrared for night vision.
- The spill-resistant design expands the scope of applications by letting you install the camera under the eaves of house or store.
- Bundle Surveillance Software:
  - Video File Management: Video file database and playback control.
  - Storage Recyclable: When running out of disk space, files with the earliest date will be overwrite automatically.
  - Motion Detection: Detect any movement in the mask area and invoke the alarm as soon as movement is detected.
  - Supports up to 16 cameras remote view and record simultaneously.

**NOTE: When remote view and record 16 cameras simultaneously, a system with higher CPU performance is recommend**

- Multi-Languages OSD: English/ French/ German/ Italian/ Dutch/ Spanish/ Russian/ Japanese/ Traditional Chinese.
- Supports scheduled recording function.



**Surveillance Software**



**Scheduled Recording**

## 3. System Requirements

- Processor:
  - **IE Remote View:** Intel Pentium4 2.4GHz or higher
  - **Surveillance Software:**
    - 1 channel: Intel Pentium4 2.4GHz or higher
    - 2~7 channel: Intel Pentium Core 2 Duo 2.4 GHz or higher
    - 8~16 channel: Intel Pentium Core 2 Quad 2.83 GHz or higher
- RAM: 1GB or higher
- Web browser: Microsoft Internet Explorer V6.0 or higher



## GRANDTEC ELECTRONIC CORP.

8F, NO.268, LIAN CHENG RD., CHUNG HO CITY, TAIPEI HSIEN 235, TAIWAN, R.O.C.

Tel: +886-2-8227 3588

Fax: +886-2-8227 3589 / 8227 3599

E-Mail: [grand@grand.com.tw](mailto:grand@grand.com.tw)

Web Site: [www.grand.com.tw](http://www.grand.com.tw)

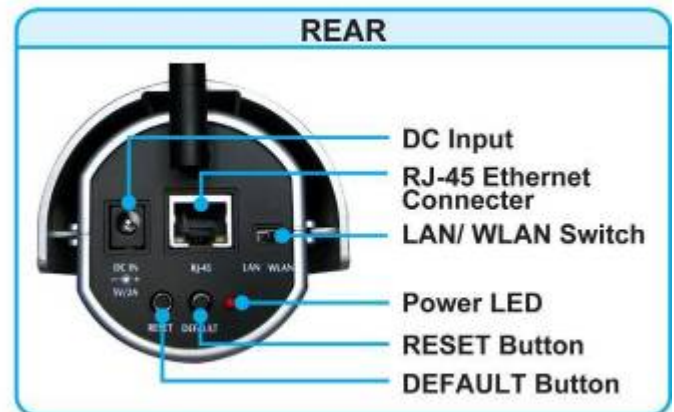
### 4. Specifications

| Model Name               | Grand Mega Pixel IP Camera  | Grand Mega Pixel Wi-Fi Camera |
|--------------------------|---|-------------------------------|
| Camera-Image Sensor      | 1/4" CMOS SXGA Sensor (1.3 Mega Pixel)  |                               |
| Motion Detection-Action  | Send the snapshot picture to a email  |                               |
| Remote Management        | Configuration can be accessed via Web browser   |                               |
| Multi-Language           | English/ French/ Portuguese/ German/ Italian/ Dutch/ Spanish/<br>Russian/ Japanese/ Traditional Chinese   |                               |
| Network Protocol         | TCP/IP / HTTP / FTP / SMTP / DHCP / PPPoE / DDNS / UPnP / NTP   |                               |
| Network (Ethernet)       | 10/100Mbps Fast Ethernet  |                               |
| Network (Wireless)       | N/A   | 802.11g/ b Wireless           |
| Wireless Operating Range | N/A   | 20 meters (indoor)            |
| Video Encoder            | H.264 & MJPEG   |                               |
| Audio                    | Built-in High Sensitivity Microphone for remotely listen in   |                               |
| Video Resolution         | 160 x 120/ 320 x 240/ 640 x 480/ 1280 x 1024  |                               |
| Operating System         | Windows XP/ Vista/ Linux OS   |                               |
| Browser                  | Internet Explorer V6 or above (iPhone Web Browser support)  |                               |
| Surveillance Software    | <ol style="list-style-type: none"><li>1. Video File Management: Video file database and playback control.</li><li>2. Storage Recyclable: When running out of disk space, files with the earliest date will be overwrite automatically.</li><li>3. Motion Detection: Detect any movement in the mask area and invoke the alarm as soon as movement is detected.</li><li>4. Supports up to 16 cameras remote view and record simultaneously.<br/><b><u>NOTE: When remote view and record 16 cameras simultaneously, a system with higher CPU performance is recommend</u></b></li><li>5. Multi-Languages OSD: English/ French/ German/ Italian/ Dutch/ Spanish/ Russian/ Japanese/ Traditional Chinese.</li><li>6. Supports scheduled recording function.</li></ol> |                               |
| Power                    | DC 5V/ 2A   |                               |
| Operating Conditions     | 0°C ~ 60°C  |                               |
| Dimensions (L/W/H)       | 185mm x 76mm x 70.5mm (not included Wi-Fi Antenna)  |                               |



## **5. Hardware Connection and Description**

### ■ Grand Mega Pixel Wi-Fi Spill-Resistant Camera



### ■ Grand Mega Pixel IP Spill-Resistant Camera

