

GRAND MEGA PIXEL Wi-Fi/ IP CAMERA

H.264 Format/ 1.3 Mega Pixel Digital Recording/ Video & Audio Transmission



The advertisement features a central image of a white Grand Mega Pixel Wi-Fi/ IP camera with a black antenna, mounted on a white base. The camera is set against a background of a blue globe. A red arrow points from the camera towards a circular inset showing a man and a woman sitting at a desk, looking at a computer monitor displaying a live video feed of a store interior. Another circular inset shows a close-up of the camera's lens and sensor area, with the text "6 IR LED Night Vision (optional)" above it. A third circular inset shows a smartphone displaying a live video feed, with the text "Supports iPhone Web Browser" around it. The text "Remotely View & Listen" is written in yellow and red on the globe. Below the main image is a grid of 11 icons, each with a corresponding feature name and description.

6 IR LED Night Vision (optional)

Mega Pixel WiFi Camera

Supports iPhone Web Browser

Remotely View & Listen

- 1.3Mega
1.3 Mega Pixel (1280 x 1024)
- H.264
H.264/ MJPEG Dual Codec
- iPhone Web Browser Support
- OSD
Multi-Language OSD
- Network Function
- Built-in High Sensitivity Microphone
- real time
Remote View & Listen
- Motion Detected Mail
- Night Vision
6 IR LED (optional)
- Surveillance Software (1~16 camera preview & record)
- VISTA Linux
Compatible with Win XP/ Vista/ Linux (IE) Win XP/Vista (software)

1. Introduction

Grand Mega Pixel Wi-Fi/ IP Cameras are full featured network cameras that enable you to remote view and listen with your web browser (supports iPhone WEB Browser). The Grand Mega Pixel Wi-Fi / IP Cameras use the latest **H.264** video compression technology that provides clearer and more fluent image transmission. Choose the Grand Mega Pixel Wi-Fi / IP Cameras to enhance safety and security at your home or office.

GRANDTEC ELECTRONIC CORP.

8F, NO.268, LIAN CHENG RD., CHUNG HO CITY, TAIPEI HSIEN 235, TAIWAN, R.O.C.

Tel: +886-2-8227 3588

Fax: +886-2-8227 3589 / 8227 3599

E-Mail: grand@grand.com.tw

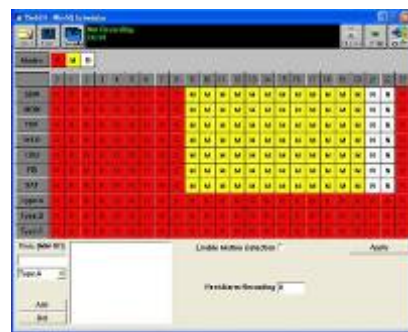
Web Site: www.grand.com.tw

2. Products Features

- 1/4" CMOS SXGA Sensor (1.3MegaPixel)
 - Built-in High Sensitivity Microphone for remote listening.
 - High Resolution Image Processor (160x120/ 320x240/ 640x480/ 1280x1024)
 - High Performance Image Compression with **H.264** & MJPEG codec
 - Supports TCP/IP / HTTP / FTP / SMTP / DHCP / PPPoE / DDNS / UPnP / NTP service
 - Supports Motion detected Mail Function
 - Remote view through the IE browser, simply type in the IP address
 - Supports iPhone Web Browser (in MJPEG format).
 - IP Address Auto Detect Setup
 - Compatible with Windows XP/ Vista/ Linux OS.
 - Multi-Languages OSD: English / French / Portuguese / German / Italian / Netherland / Spanish/ Russian / Japanese / Traditional Chinese
 - Ethernet RJ-45,10/100 Base-T auto-sense
 - Built-in 802.11g Wi-Fi Module (Wi-Fi Camera only)
 - 6-LED infrared for night vision (optional).
 - Bundle Surveillance Software:
 - Video File Management: Video file database and playback control.
 - Storage Recyclable: When running out of disk space, files with the earliest date will be overwrite automatically.
 - Motion Detection: Detect any movement in the mask area and invoke the alarm as soon as movement is detected.
 - Supports up to 16 cameras remote view and record simultaneously.
- NOTE: When remote view and record 16 cameras simultaneously, a system with higher CPU performance is recommend**
- Multi-Languages OSD: English/ French/ German/ Italian/ Dutch/ Spanish/ Russian/ Japanese/ Traditional Chinese.
 - Supports scheduled recording function.



Surveillance Software



Scheduled Recording

3. System Requirements

- Processor:
 - **IE Remote View:** Intel Pentium4 2.4GHz or higher
 - **Surveillance Software:**
 - 1 channel: Intel Pentium4 2.4GHz or higher
 - 2~7 channel: Intel Pentium Core 2 Duo 2.4 GHz or higher
 - 8~16 channel: Intel Pentium Core 2 Quad 2.83 GHz or higher
- RAM: 1GB or higher
- Web browser: Microsoft Internet Explorer V6.0 or higher



GRANDTEC ELECTRONIC CORP.

8F, NO.268, LIAN CHENG RD., CHUNG HO CITY, TAIPEI HSIEN 235, TAIWAN, R.O.C.

Tel: +886-2-8227 3588

Fax: +886-2-8227 3589 / 8227 3599

E-Mail: grand@grand.com.tw

Web Site: www.grand.com.tw

4. Specifications

Model Name	Grand Mega Pixel IP Camera	Grand Mega Pixel Wi-Fi Camera
Camera-Image Sensor	1/4" CMOS SXGA Sensor (1.3 Mega Pixel)	
Motion Detection-Action	Send the snapshot picture to a email	
Remote Management	Configuration can be accessed via Web browser	
Multi-Language	English/ French/ Portuguese/ German/ Italian/ Dutch/ Spanish/ Russian/ Japanese/ Traditional Chinese	
Network Protocol	TCP/IP / HTTP / FTP / SMTP / DHCP / PPPoE / DDNS / UPnP / NTP	
3Network (Ethernet)	10/100Mbps Fast Ethernet	
Network (Wireless)	N/A	802.11g/ b Wireless
Wireless Operating Range	N/A	20 meters (indoor)
Video Encoder	H.264 & MJPEG	
Audio	Built-in High Sensitivity Microphone for remotely listen in	
Video Resolution	160 x 120/ 320 x 240/ 640 x 480/ 1280 x 1024	
Operating System	Windows XP/ Vista/ Linux OS	
Browser	Internet Explorer V6 or above (iPhone Web Browser support)	
Surveillance Software	<ol style="list-style-type: none"> 1. Video File Management: Video file database and playback control. 2. Storage Recyclable: When running out of disk space, files with the earliest date will be overwrite automatically. 3. Motion Detection: Detect any movement in the mask area and invoke the alarm as soon as movement is detected. 4. Supports up to 16 cameras remote view and record simultaneously. <u>NOTE: When remote view and record 16 cameras simultaneously, a system with higher CPU performance is recommend</u> 5. Multi-Languages OSD: English/ French/ German/ Italian/ Dutch/ Spanish/ Russian/ Japanese/ Traditional Chinese. 6. Supports scheduled recording function. 	
Power	DC 5V/ 2A	
Operating Conditions	0°C ~ 60°C	
Dimensions (L/W/H)	121mm x 79mm x 43.5mm (not included Wi-Fi Antenna)	

5. Hardware Connection and Description

■ Grand Mega Pixel Wi-Fi Camera



■ Grand Mega Pixel IP Camera

